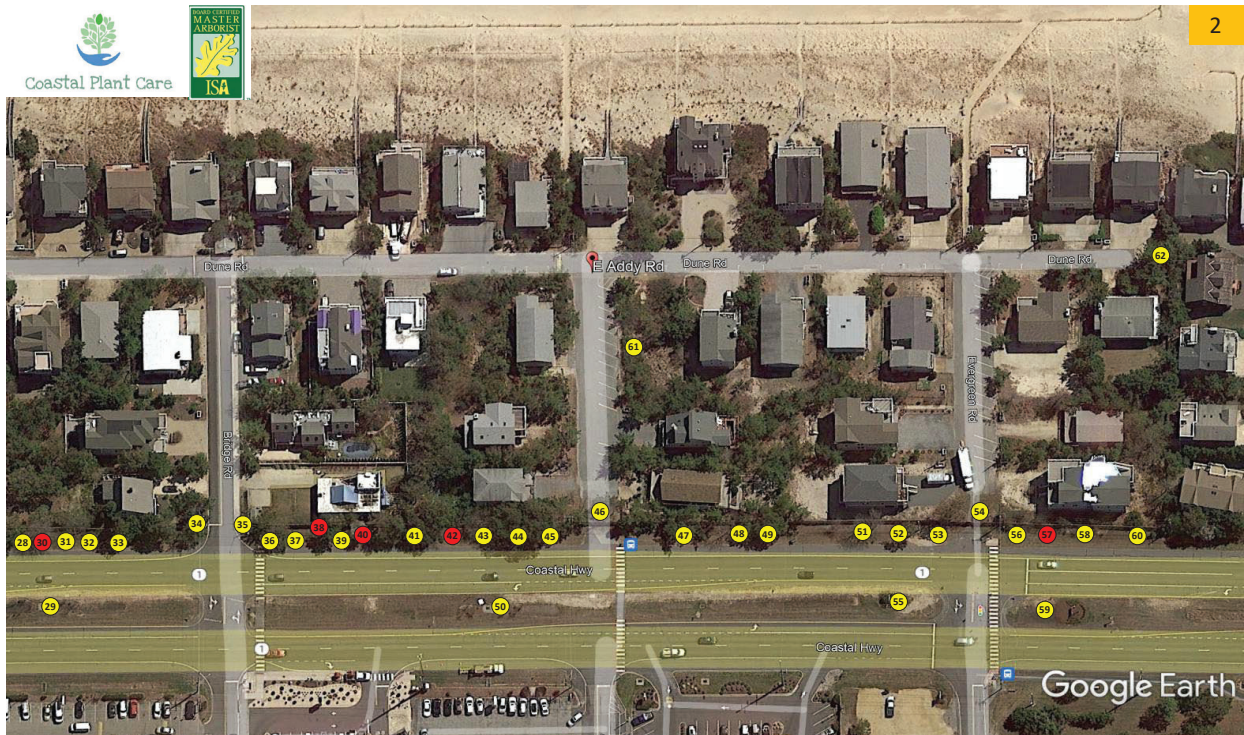
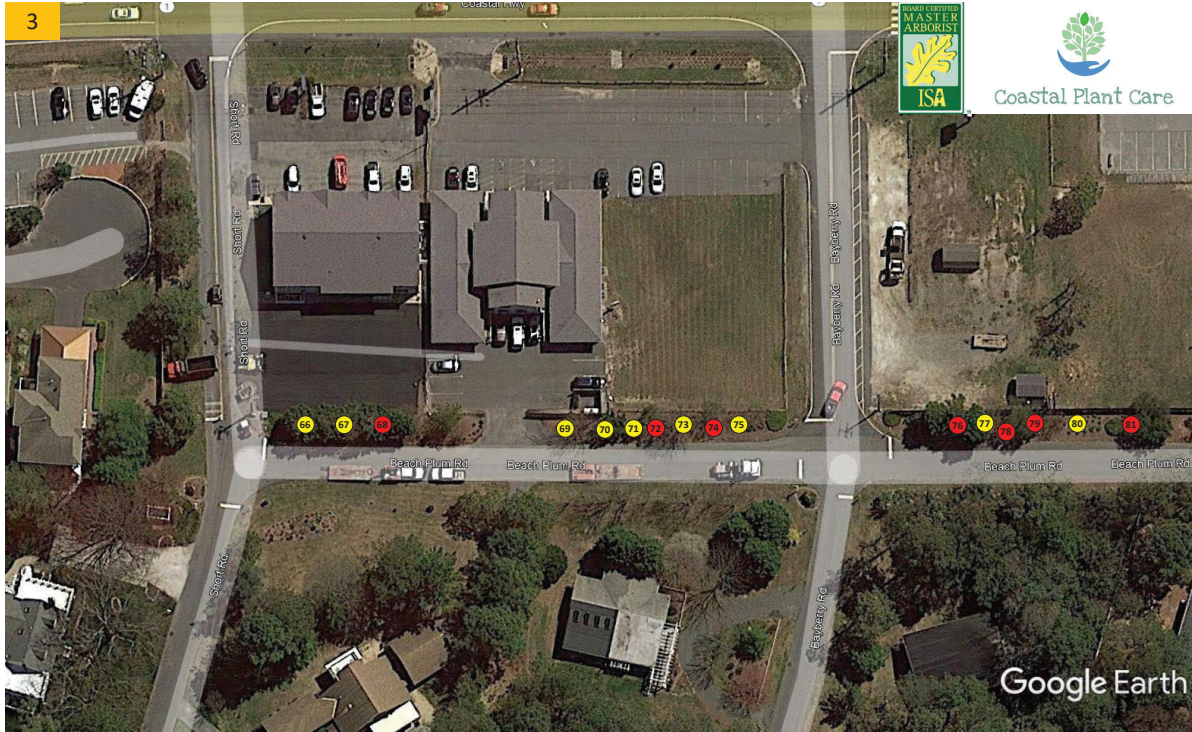


Tree ID#	Map #	Species	Total Trees	Diameter (in)	Condition Rating	Removal	P 1 Pruning	Renov	IPM	Ferti	Disease	Planting	Type
1	1	Cryptomeria	3	7	60		X		X	X			
2	1	Holly & Crape Myrtle	3	6	70		X		X	X	X		
3	1	Roses	12	2	35	X							Flowers
4	1	Pine	1	24	75		X						
5	1	Crape Myrtle	5	4	65		X		X	X	X		
6	1	Bayberry & Willow	2	12	40	X							
7	1	Cherry	1	9	50	X							
8	1	Pine	3	15	70		X						
9	1	Bayberry	1	13	25	X							
10	1	Pine	2	12	75		X						
11	1	Arborvitae	2	1	50				X	X			
12	1	Olive	2	12	45	X						6	Arbs
13	1	Arborvitae	4	1	50				X	X			
14	1	Red Maple	3	7	55		X		X	X			
15	1	Pine	4	16	70		X						
16	1	Cedar	1	13	70		X						
17	1	Pine	1	10	65		X		X	X			
18	1	Holly	4	1.5	70				X	X			
19	1	Bayberry	1	3	70	X							
20	1	Cherry	1	9	15	X						4	Trees
21	1	Pine	1	20	70		X						
22	1	Open Space										4	Trees
23	1	Pine	3	12	40		X						
24	1	Crape Myrtle	7	5	60		X		X	X	X	1	Crape
25	1	Pine & Crape Myrtle	4	8	70		X		X	X	X		
26	1	Pine	2	18	75		X						
27	1	Crape Myrtle	5	7	75		X		X	X	X		
63	1	Pine & Crape Myrtle	2	6	70		X		X	X	X		
64	1	Leyland & Junipers	18	5	40	X						18	Trees
65	1	Pine	4	10	65		X						
SUBTOTALS			102	3.52	3.52	8	18	0	12	3	6	33	0



Tree ID#	Map #	Species	Total Trees	Diameter (in)	Condition Rating	Removal	P 1 Pruning	Renov	IPM	Ferti	Disease	Planting	Type
28	2	Pine	4	20	75		X						
29	2	Crape Myrtle	7	6	75		X		X	X	X		
30	2	Blackgum (stump)											
31	2	Bayberry	5	4	80		X						
32	2	Cherry	1	14	70		X				X		
33	2	Pine/Leyland/Arb.	8	12	65		X						
34	2	Pine	1	7	80		X						
35	2	Cherry	1	6	65		X		X		X		
36	2	Holly & Pine	4	12	75		X						
37	2	Crape Myrtle	5	3	75		X						
38	2	Bayberry	1	7	50	X							
39	2	Pine	2	13	70		X						
40	2	Amelanchier	1	14	50	X						1	Holly
41	2	Pine	3	20	65		X						
42	2	Cherry	1	15	50	X							
43	2	Olive	1	6	75		X						
44	2	Cherry	1	10	75		X						
45	2	Pine	4	22	75		X						
46	2	Sycamore & Pine	3	16	65		X		X	X	X		
47	2	Pine & Leyland Cypress	7	8	60		X						
48	2	Sweetgum & Sycamore	4	9	60		X		X	X	X		
49	2	Pine	6	10	70		X						
50	2	Crape Myrtle	5	6	75		X					3	Crapes
51	2	B Gum/S Gum/Maple	9	12	65		X		X	X	X		
52	2	Pine	1	16	75		X						
53	2	Red Maple	1	4	55		X		X	X			
54	2	Crape Myrtle	2	8	65		X		X	X	X		
55	2	Crape Myrtle	2	4	65		X		X	X	X		
56	2	Red Maple	2	5	60		X		X	X	X		
57	2	Olive & Bayberry	2	4	50	X							
58	2	Crape Myrtle	5	5	65		X		X	X	X		
59	2	Crape Myrtle											
60	2	Cryptomeria	3	6	75		X		X	X	X		
61	2	All Trees	6	9	70		X		X	X	X		
62	2	Crape Myrtle	1	2	80		X		X	X	X		
SUBTOTALS			109	3.30	3.30	4	29	0	13	12	13	0	0



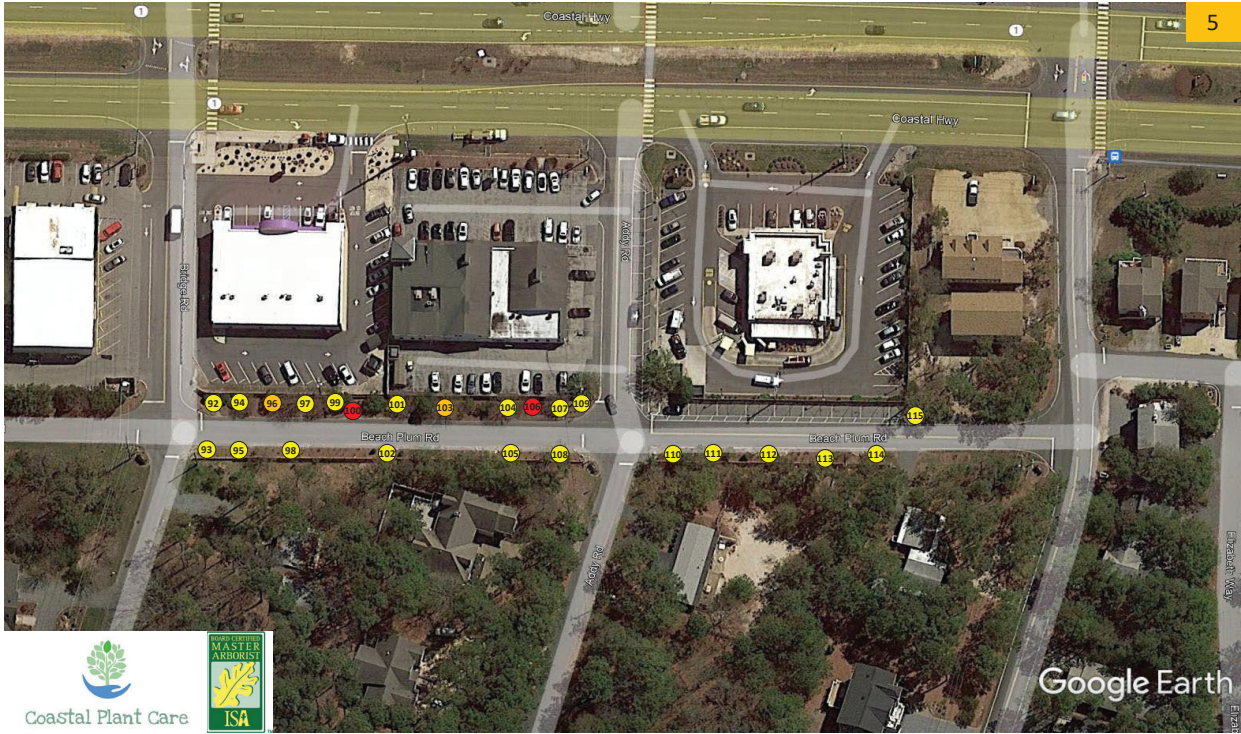
Middlesex Beach Association
 Summer 2022 Tree Inventory and Master Plan
 Jeremy Hager, ISA Board Certified Master Arborist MA-4360B

Tree ID#	Map #	Species	Total Trees	Diameter (in)	Condition Rating	Removal	P 1 Pruning	Renov	IPM	Ferti	Disease	Planting	Type
66	3	Pine & Leyland Cypress	7	14	65		X						
67	3	Crape Myrtle	4	9	70		X		X	X	X		
68	3	Pine & Cherry	1	6	10	X							
69	3	Crape Myrtle	1	14	75		X						
70	3	Hollywood Juniper	1	16	75		X						
71	3	Holly	1	6	65				X	X			
72	3	Cherry & Bayberry	2	7	50	X							
73	3	Crape Myrtle	1	26	80		X						
74	3	Bayberry	1	6	10	X							
75	3	Arborvitae & Vitex	3	3	75		X						
76	3	Leyland Cypress	3	16	65	X						3	Arbs
77	3	Crape Myrtle	1	14	75		X		X	X	X		
78	3	Cherry	1	6	45	X							
79	3	Bayberry	1	13	75	X							
80	3	Arborvitae	3	4	75				X	X			
81	3	Bayberry	2	13	30	X							
116	3	tbi											
117	3	tbi											
118	3	tbi											
119	3	tbi											
120	3	tbi											
121	3	tbi											
SUBTOTALS			33	2.06	2.06	7	7	0	4	4	2	3	0



Middlesex Beach Association
 Summer 2022 Tree Inventory and Master Plan
 Jeremy Hager, ISA Board Certified Master Arborist MA-4360B

Tree ID#	Map #	Species	Total Trees	Diameter (in)	Condition Rating	Removal	P 1 Pruning	Renov	IPM	Ferti	Disease	Planting	Type
82	4	Pine & Crape Myrtle	2	12	75		X						
83	4	Bayberry	5	6	40			X					
84	4	Crape Myrtle	1	14	80		X						
85	4	Bayberry	1	5	10	X							
86	4	Vitex	1	14	70		X						
87	4	Bayberry	9	12	70			X					
88	4	Holly	2	8	90		X						
89	4	Bayberry	9	12	70			X					
90	4	Holly	3	8	90		X						
91	4	Crape Myrtle	2	7	75		X		X	X	X		
SUBTOTALS			35	3.50	3.50	1	6	3	1	1	1	0	0



Middlesex Beach Association

Tree ID#	Map #	Species	Total Trees	Diameter (in)	Condition Rating	Removal	P 1 Pruning	Renov	IPM	Ferti	Disease	Planting	Type
92	5	Holly	3	6	90		X						
93	5	Crape Myrtle	1	5	80		X						
94	5	Vitex	1	12	85		X						
95	5	Pine	1	5	75		X						
96	5	Bayberry	1	7	70			X					
97	5	Crape Myrtle	1	25	80		X						
98	5	Holly & Crape Myrtle	2	3	90		X		X	X	X		
99	5	Vitex	1	12	75		X						
100	5	Bayberry	3	7	15	X							
101	5	Vitex	1	13	80		X						
102	5	Holly	2	4	85		X						
103	5	Bayberry	1	13	70			X					
104	5	Crape Myrtle	3	14	75		X						
105	5	Crape Myrtle	1	4	85		X						
106	5	Bayberry	2	6	50	X							
107	5	Crape Myrtle	2	14	80		X						
108	5	Pine & Arborvitae	2	3	70		X						
109	5	Vitex	1	8	70		X						
110	5	Crape Myrtle	1	7	75		X						
111	5	Pine	2	8	70		X						
112	5	Holly & Crape Myrtle	3	4	90		X						
113	5	Pine & Bayberry	3	7	70		X						
114	5	Crape Myrtle	1	6	75		X		X	X	X		
115	5	Pine	1	14	60		X						
SUBTOTALS			40	8.63	73.54	2	20	2	2	2	2	0	0